

## AMBIENT-HEATED CO<sub>2</sub> VAPORIZER (AHV)

Use **ambient air** (minimum temperature of 50°F or 10°C) for **fully automatic, energy efficient** CO<sub>2</sub> vaporizing and **eliminate vaporizing capacity loss.**

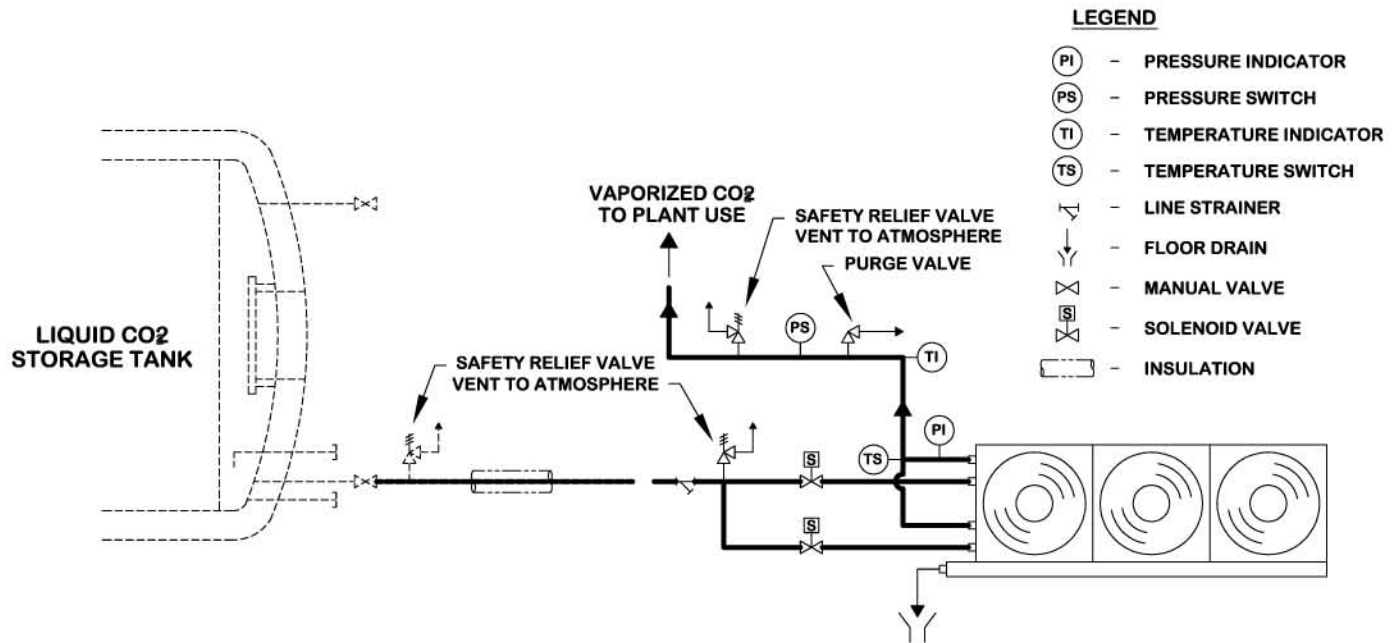
### FEATURES

- **HIGH QUALITY CONSTRUCTION**
  - Completely Packaged, Floor-Mount Design
  - STAINLESS STEEL Tubes and Connections
  - Galvanized Steel Casing
  - Galvanized Steel Condensate Tray
  - Aluminum Fins
- **ENERGY-SAVING**
  - Uses heat in ambient air to vaporize CO<sub>2</sub>
  - Eliminates the need for steam or large electric heating elements
- **PREVENTS FREEZE-UPS AND CAPACITY LOSS**
  - Dual Coil System
  - Automatically alternates heat exchange between coils
  - Prevents ice build-up and CO<sub>2</sub> capacity loss
- **FULLY AUTOMATIC CONTROLS FOR 24/7 OPERATION**
  - PLC
  - Liquid CO<sub>2</sub> Shut-off Valves
  - Low Pressure CO<sub>2</sub> Warning Switch
  - Vapor CO<sub>2</sub> Temperature Switch
  - Safety Relief Valves
- **VALUABLE OPTIONS**
  - Ceiling-Mount Design
  - STAINLESS STEEL Casing
  - STAINLESS STEEL Condensate Tray
  - Epoxy-coated Fins
  - Electric Defrosting



AV082007

## AMBIENT-HEATED CO<sub>2</sub> VAPORIZER (AHV)



Vaporizer Model	Capacity		No. Fans	Fan Size		CO <sub>2</sub> Inlet		CO <sub>2</sub> Outlet	
	lb/hr	kg/hr		HP	KW	inch	mm	inch	mm
E-300	661	300	2	0.50	0.38	¾"	19	1½"	38
E-500	1,102	500	2	0.50	0.38	¾"	19	1½"	38
E-1000	2,205	1000	2	1.00	0.75	1"	25	1½"	38
E-1200	2,645	1,200	2	1.00	0.75	1"	25	2"	51
E-1500	3,307	1,500	2	1.50	1.10	1"	25	2"	51
E-2000	4,007	2,000	4	0.75	0.56	1½"	38	2"	51
E-2500	5,512	2,500	4	1.00	0.75	1½"	38	2"	51
E-3000	6,614	3,000	4	1.50	1.10	1½"	38	2"	51