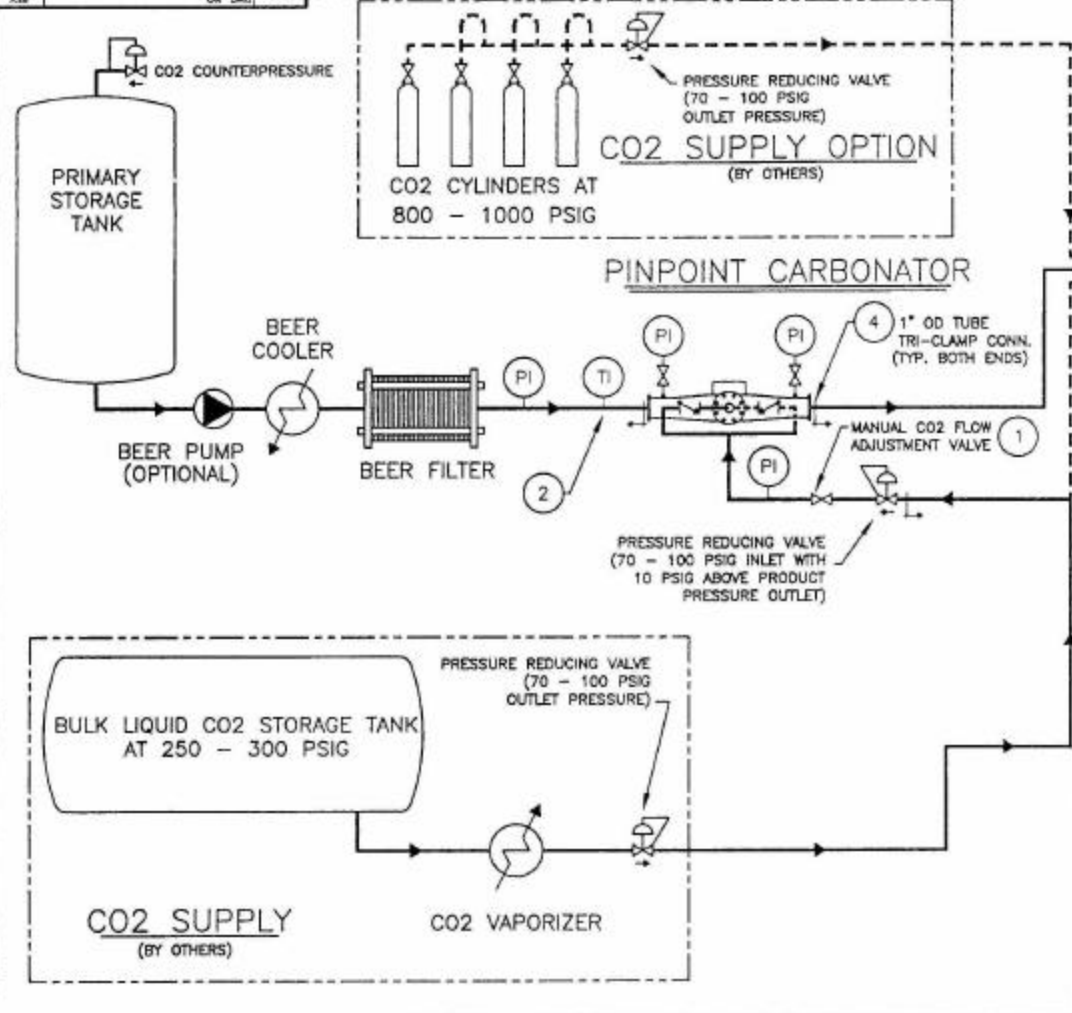


9200-00-08 B
ON TANK

DO NOT SCALE THIS PRINT. REPORT ERRORS.
FRACTIONAL MACHINED DIMENSIONS NOT TO EXCEED +/- .010"

THIS DRAWING AND ALL INFORMATION THEREON IS THE PROPERTY OF THE WITTEMAN CO., INC. AND IS CONFIDENTIAL AND MUST NOT BE MADE PUBLIC OR COPIED. IT IS SUBJECT TO RETURN ON DEMAND.



NOTES

- 1 CO2 FLOWRATE - FOR EACH VOLUME OF CO2 ADDED TO PRODUCT, APPROXIMATELY 1/2 LB OF CO2 PER BBL CARBONATED IS REQUIRED.
- 2 BEER PRESSURE AND TEMPERATURE ARE CRITICAL FOR CO2 SATURATION (REFER TO CO2 SATURATION CHART TO DETERMINE NECESSARY OPERATING CONDITIONS).
- 3 DOWNSTREAM PIPE LENGTH REQUIRED FOR ABSORPTION (MAY BE COILED):

$$\frac{\text{MAXIMUM BARRELS / HOUR}}{\text{PIPE DIA.}^2} = \text{FEET OF PIPE}$$
- 4 CARBONATOR IS SUPPLIED WITH 1" DIA. O.D. TUBE TRI-CLAMP CONNECTIONS. SPECIAL ENDS ARE AVAILABLE UPON REQUEST. (MATING CONNECTIONS MUST BE COMPATIBLE WITH SUPPLIED CARBONATOR ENDS. ANY VARIATIONS BETWEEN FITTINGS AND PIPE DIAMETERS WILL CAUSE TURBULANCE THAT WILL RESULT IN CO2 BEING RELEASED FROM PRODUCT).
- 5 ↓ INDICATES EQUIPMENT AND PIPING BY OTHERS

REDRAWN, INCREASED TEXT SIZE 11-20-97 SAM/FLM
 REVISIONS

Wittemann co., inc.
PALM COAST, FLORIDA, USA

**1" PINPOINT CARBONATOR
TYPICAL INSTALLATION**

NAME	SOTO	JG	S.D.	SCALE	NTS
DATE	8-95	8-95			
BY	DR.	D.K.	APPD.		

DWG. NO. **B 80-00-0026** REV. **A**